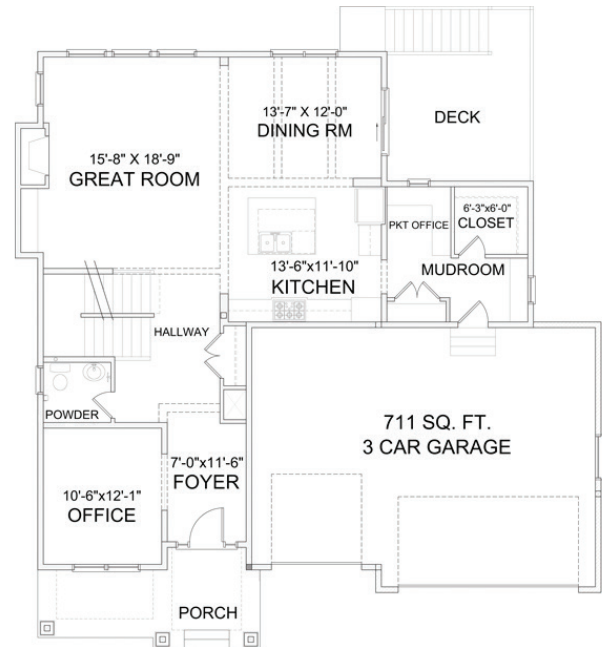


# 4125 Lady Slipper Rd N, Lake Elmo

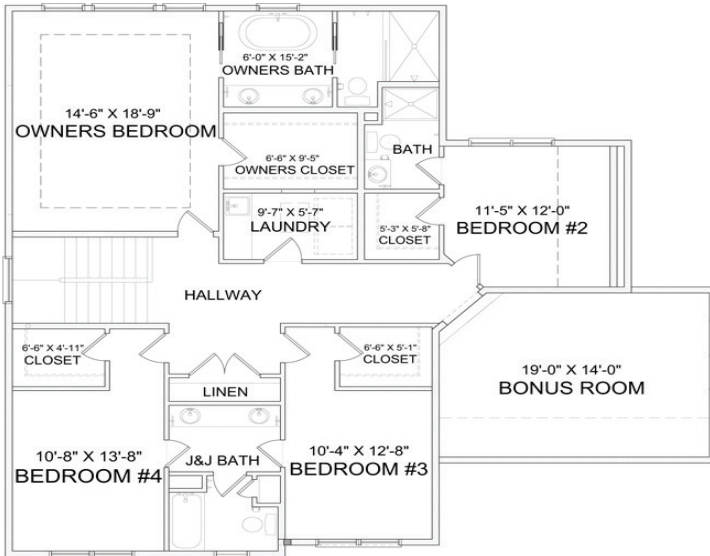
## GENEVA ELEVATION C

4 Bedrooms  
4 Baths  
3 Car Garage  
3,230 sq. ft.

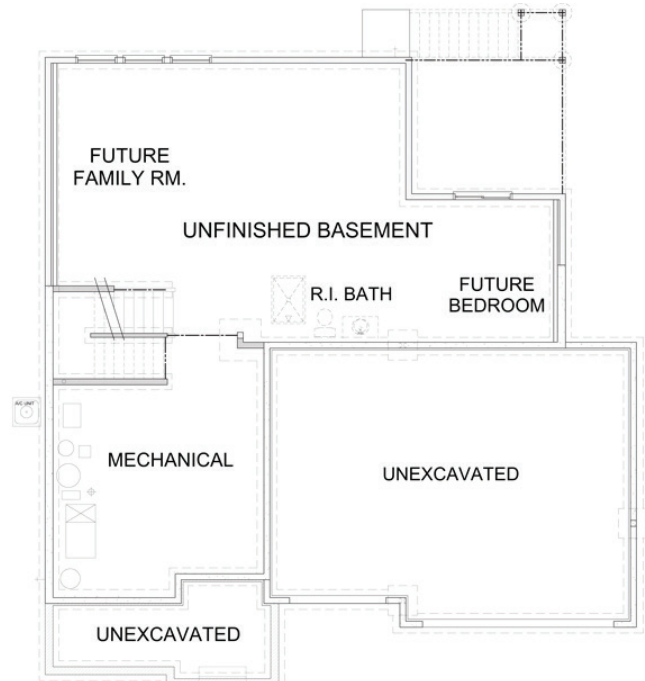
### MAIN LEVEL



### UPPER LEVEL



### LOWER LEVEL



# STONEGATE BUILDERS

■ A DIVISION OF GONYEA COMPANIES ■

Home is subject to prior sale or withdrawal from the market. Photographs are for illustrative purposes only and may show options that are not available or for an additional charge. Renderings and floor plans are artist conception only. Square footage is approximate. Pricing is subject to change at anytime without notice. See the sales associate for details. License #BC723087. 1000 Boone Avenue North, Suite 400 • Minneapolis, MN 55427 • stonegatebuilders.com • 763.317.8831